

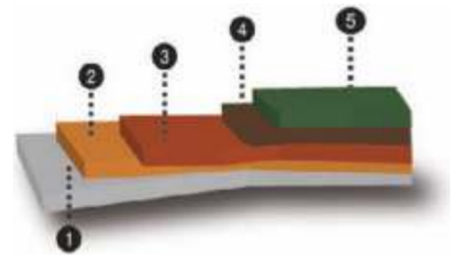
polyurethane self-leveling coating



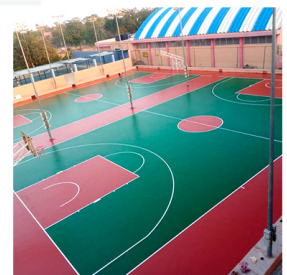
DESCRIPTION

Two component liquid aromatic polyurethane mixing ratio 1:8 composition. Suitable for self-leveling coating for outdoor sport surfaces. has excellent mechanical properties like high impact. It is applied on prefabricated subfloors of sports flooring such as shock-pad in rolls, or wet-pour rubber cushion mix of SBR rubber granules and PU BINDER after they are sealed with elastic pore sealer Combines finally polyurethane finish paint POLYSPORT 1052 for the creation of a multilayer polyurethane floor, especially designed for sport halls such as tennis, basketball, handball, volleyball and multipurpose halls

WARNING : Good mixing is very important so that the quality does not differ from one site to another



Colour	Beige
Hardness	(shore) 87A
Density of mixture (25°C)	1.40-1.50 Kg/lt
Mechanical properties	Elongation: 190% Stress (mPa): 6.1 MPa
Pot-life (25°C)	20:30 Min at (25°C)s
UV resistance	A colour change is expected due to its aromatic polyurethane composition. This discolouration does not affect its mechanical properties
Curing (25°C and %60 relative humidity)	After 24 hours



TECHNICAL DATA

INFORMATION ON THE PRODUCT BEFORE APPLICATION

Physical state	Creamy
Chemical description	TWO-component aromatic polyurethane
,Packaging	Metal containers a 250 KG + 31.2 KG Hardener OR 2.69kg Hardener + KG 21.5
Non-volatile content (%)	98%
(Flash point	>120°C (ASTM D 93
Available colour	Beige or Red
Application temperature	Min 10 - 40 °C
,CONSUMPTION	0.8 - 2.5 kg/m ² depending on the porosity of the subfloor

