

POLYURETHAN TOP COATING 2K

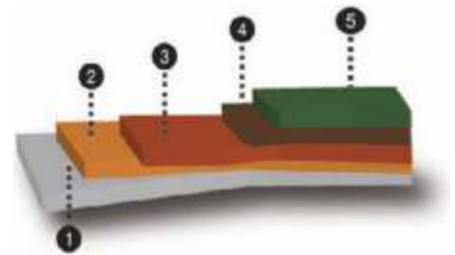


DESCRIPTION

Two component liquid aromatic polyurethane mixing ratio 1:8 composition. Suitable for Top Coating Pu System, It is applied as a final, sealing layer on top of playground floorings, made of SBR rubber granules plus PU binder mixture, or EPDM plus PU binder mixture on safety tiles and on top of polyurethane outdoor sports systems such as POLYFLEX PU-EX. It is UV-resistant and thus absolutely suitable for outdoor surfaces, including running tracks, for UV-protection in case of sensitive, light colors such as blue, orange, green. Ideal for protection of EPDM rubber flooring

..

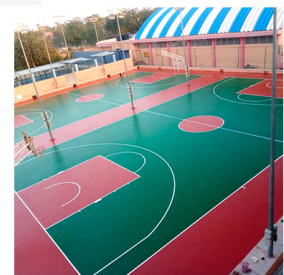
WARNING : Good mixing is very important so that the quality does not differ from one site to another



Colour	INFIX COLOR CATALOG
Hardness	(shore) 87A
Density of mixture (25°C)	1.38-1.48 kg/lit
Mechanical properties	Elongation: 190% Stress (mPa): 6.1 MPa
Pot-life (25°C)	20:30 Min at (25°C)s
UV resistance	A colour change is expected due to its aromatic polyurethane composition. This discolouration does not affect its mechanical properties
Curing (25°C and %60 relative humidity)	9-12 hours

TECHNICAL DATA

INFORMATION ON THE PRODUCT BEFORE APPLICATION



Physical state	Creamy
Chemical description	TWO-component aromatic polyurethane
,Packaging	Metal containers
	a 250 KG + 31.2 KG Hardener OR 2.69kg Hardener + KG 21.5
Non-volatile content (%)	98%
(Flash point	>120°C (ASTM D 93
Available colour	INFIX COLOR CATALOG
Application temperature	Min 10 - 40 °C
CONSUMPTION	200-250 gr/m ² on polyurethane floorings



Polyurethane elastic pore filler 2K



Polyurethane elastic pore filler

PREPARATION

Applied on dry surfaces without rising humidity issues, free of materials that might prevent bonding e.g. dust, loose particles, grease etc (in case of asphalt or concrete).

APPLICATION

The success in the application depends on the right preparation of the underlay and use of the materia

- Good, dry cleaning of the surface from dust and residues using vacuum cleaner and .squeegees
- Caution must be taken so that temperature of the support surface as well as ambient air remains above 15 °C during application and curing of the materials while relative .humidity does not exceed 75%
- The A component should be thoroughly stirred to incorporate any slight separation, while continuing stirring, the hardener (B component) should be added. Continue stirring until a .homogeneous mix is obtained
- The application is done by airless sprayer or short-haired mohair roller in 2 crossing layers

REMARKS

- Working time of TOP COATING decreases when ambient temperature rises
- Prolonged storage of partially used containers, containing TOP COATING must be avoided, as contact with atmospheric moisture could possibly cause clouding of the product
- After hardening TOP COAT is completely safe for health
- The second layer of TOP COAT has to be applied strictly within 24 hours, depending on the temperature and humidity (European conditions) or within 3–6 hours (GCC high-temperature conditions) in order to cover the surface swiftly and protect it from unwanted weather or other adverse conditions (sand dust, accumulated dirt or foreign matter etc.). In case the 24-hour limit (Europe) or the 3–6-hour limit (GCC) is surpassed or weather or other adverse conditions interfere between layers at any time, the surface might need sanding again to restore smoothness and cleanliness before applying .subsequent layers of the aliphatic top coat

SAFETY

Harmful if swallowed. Seek immediately medical attention. Rubber gloves and safety glasses with side guards should be worn

